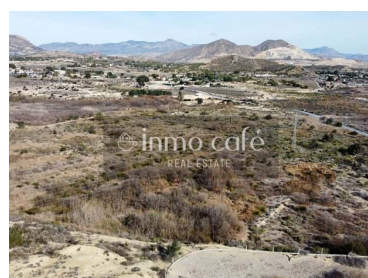
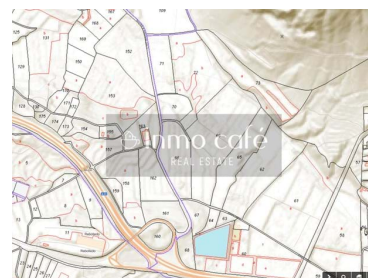
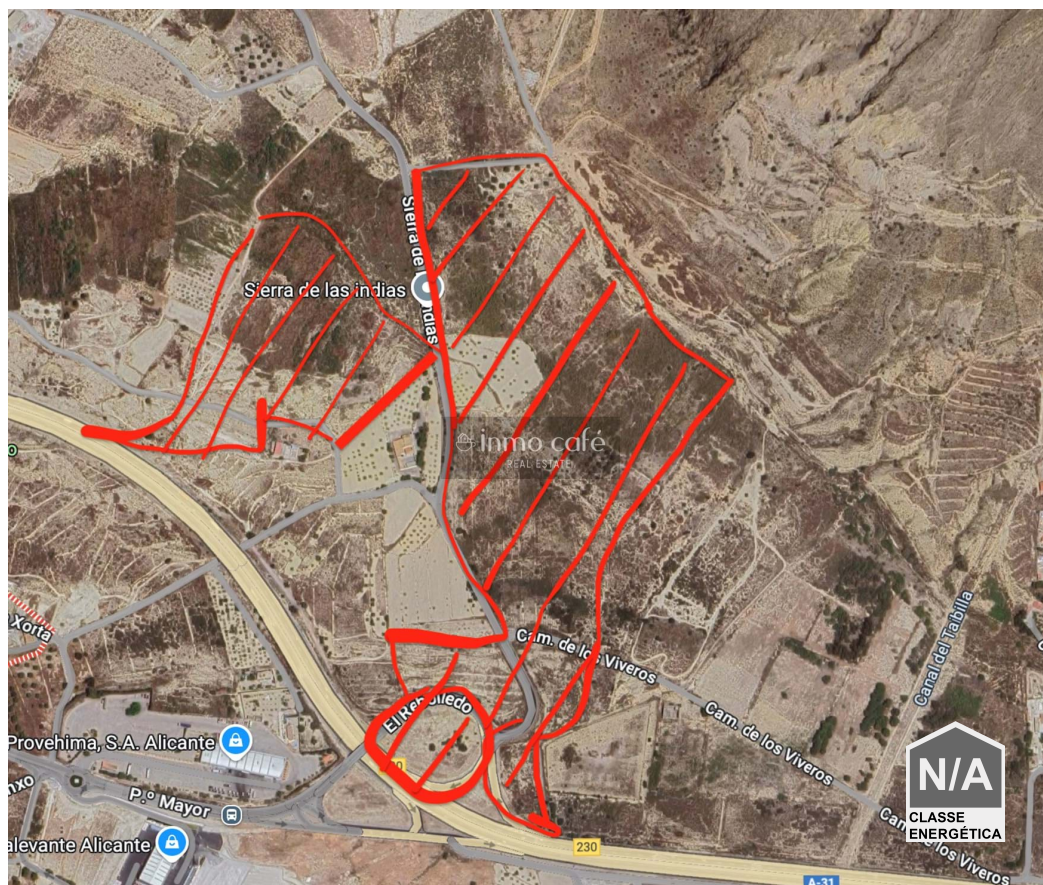




Alicante/Alacant - Rural land



 24489

Land Area (m²)

1 470 000 €

(EUR €)

Rustic plot in El Rebolledo (Alicante)

We present an extensive rustic plot located in El Rebolledo, Alicante, distributed over several adjoining plots. With a total area of 244891 m² (and the possibility of acquiring more area), this space offers a natural and quiet environment, ideal for developing agricultural projects or any rural initiative that requires a large and versatile area.

The land is made up of contiguous plots that facilitate the planning and execution of various projects. Its large extension allows it to be adapted to multiple uses, maximizing the performance and use of the property, which makes it a strategic option for investors and developers.

One of the most outstanding advantages is the excellent connectivity offered by this property. Thanks to the proximity of the A-31 motorway, access to the land is quick and direct, guaranteeing fluid communication with the main transport routes and facilitating mobility for any type of activity.



Sylvain Denis

+34 639 04 64 33

sylvain@inmocafe.es

T +34 639 04 64 33 · T +34 660 35 55 00 · E info@inmocafe.es

Calle Bazán, 20 - Entlo. 24, 03001 Alicante

AMI API N° 1166

¹ (Call to national fixed network) | ² (Call to national mobile network)



Key features:

- Rustic land of 244,891 m² in El Rebolledo.
- Adjoining plots that facilitate project planning.
- Ideal for agricultural projects and rural developments.
- Excellent connectivity with the A-31 motorway.
- Located in a quiet area with high potential.
- Proximity to Alicante, Elche and Alicante-Elche airport.
- Strategic opportunity for investors and developers.

El Rebolledo is a charming town in the province of Alicante, strategically located a short distance from the city of Alicante, Elche and Alicante-Elche airport. This privileged location combines the tranquility of rural life with proximity to important urban centers and services, offering unique opportunities for both agricultural projects and future developments.

Do not hesitate to contact us for more information or to arrange a viewing.

Property Features

- Proximity: Airport, Mountain, Beach, Golf course, Shopping, Restaurants, City, Open field, Pharmacy, Schools
- Views: Countryside views, Mountain views
- Energetic certification: Exempt



Sylvain Denis

+34 639 04 64 33
sylvain@inmocafe.es

T +34 639 04 64 33 · T +34 660 35 55 00 · E info@inmocafe.es
Calle Bazán, 20 - Entlo. 24, 03001 Alicante
AMI API N° 1166

¹ (Call to national fixed network) | ² (Call to national mobile network)